



A Litzler Company

## Trim Chopper

QDC-67

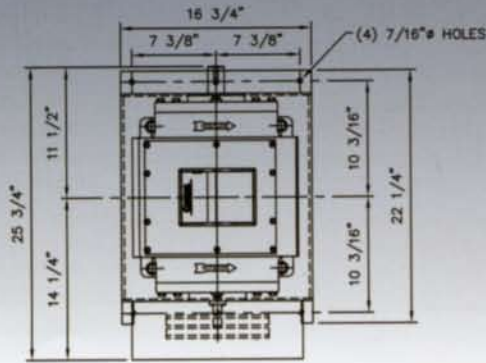


Designed for use in a pneumatic conveying system to cut paper, film, foil, nonwoven, metal and other continuous trim materials in pieces.

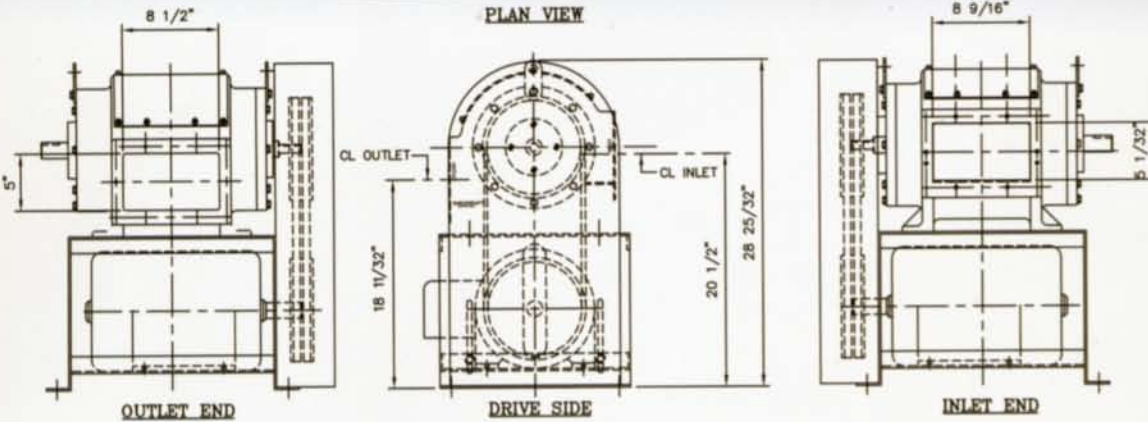
- Lower pressure loss reduces fan brake hp and energy use
- One piece casting provides and maintains tighter tolerances for cutting thinner material
- Greater mass means less vibration
- Sealed bearings for life
- Rolling shear cut
- Reversible knives double service life
- Removable knives allow sharpening on common surface grinder
- Knife system eliminates need to purchase a back up rotor and blade assembly

# Trim Chopper

## QDC-67



CHOPPER, MOTOR, & BASE WEIGHT:  
WITHOUT FLYWHEEL: 410 LBS  
WITH FLYWHEEL: 440 LBS



Pneumatic Conveying Equipment  
1525 Perry Drive S.W.  
Canton, Ohio 44710-1098  
Phone: 330-477-4574  
FAX: 330-477-3314  
E-Mail: sales@quickdraft.com  
Web Site: www.quickdraft.com

**C. A. LITZLER CO., INC.**  
Continuous Process Systems  
4800 W. 160 St.  
Cleveland, Ohio 44135-2689

Phone: 216-267-8020

FAX: 216-267-9856

E-Mail: sales@calitzler.com

Web Site: www.calitzler.com

### M&CT

Dip Molding & Coating Systems  
4800 W. 160 St.  
Cleveland, Ohio 44135-2689

Phone: 216-267-8020

FAX: 216-267-9856

E-Mail: sales@calitzler.com

Web Site: www.dipmolding.com

### PSC

Radio Frequency Dryers  
21761 Tungsten Road  
Cleveland, Ohio 44117

Phone: 216-531-3375

FAX: 216-531-6751

E-Mail: info@pscrheat.com

Web Site: www.pscrheat.com

